

General Information	
Ministerial Decision Type	Drafting Instructions: Subordinate Legislation (Regulations/Order)
Report Title	Road Traffic (St. Brelade) (Jersey) Order 1990 and Road Traffic (Disabled Persons) (Parking) (Jersey) Order 2002
Minister	Infrastructure
Signatory	Minister
Lead Department	Infrastructure, Housing and Environment (IHE)
Lead Directorate	Operations and Transport (IHE)
Ministerial Decision Summary: Public or <a href="#">Absolutely/Qualified</a> Exempt	Public Select if more than one Absolutely/Qualified Exemption.
Date decision made if different to date 'Ministerial Decision Summary' signed.	11/04/2023
Report and Supplemental Report Details	
Report Author	Project Manager - Infrastructure
Date of Report	30/06/2023
Supplementary Report Title <i>(If applicable)</i>	Insert Supplemental Report Title.
Supplementary Report Author <i>(If applicable)</i>	Insert Official Title Only.
Date of Supplementary Report <i>(If applicable)</i>	Select Date of Supplemental Report.
Ministerial Decision Report: Public or <a href="#">Absolutely/Qualified</a> Exempt	Public Select if more than one Absolutely/Qualified Exemption.
Relevant Case/Application/URN <i>(Only complete if making a decision related to an appeal/case/application)</i>	Insert Relevant Case/Application.
Relevant Proposition Number <i>(Only complete if presenting Comments or if lodging an Amendment)</i>	Insert P. number.
Relevant Scrutiny Report <i>(Only complete if presenting a ministerial response)</i>	Insert S.R. number.
Associated Law(s) and/or Subordinate Legislation	Road Traffic (St. Brelade) (Jersey) Order 1990 and Road Traffic (Disabled Persons) (Parking) (Jersey) Order 2002
Action required if recommendation agreed	Principal Legislative Drafter to be requested to draft legislation.

Resource Implications	There are no new financial and/or manpower implications.
-----------------------	--

### Introduction

The Minister for Infrastructure is asked to approve an Amendment to the Road Traffic (St. Brelade) (Jersey) Order 1990 and the Road Traffic (Disabled Persons) (Parking) (Jersey) Order 2002 to make changes to parking arrangements at St Aubin and on La Route de Noirmont as requested by the Connétable of St. Brelade.

### Recommendation

To request the Principal Legislative Drafter to draft the necessary legislation.

Only insert text if 'Other' selected above.

### Detail

The Connétable of St. Brelade has requested some changes to parking arrangements on La Neuve Route at St. Aubin. The existing arrangements are shown in appendix 1.

- The existing area of unrestricted parking which is currently being abused with a number of vehicles being left for lengthy periods of time thus removing access to the spaces used for others wishing to visit the area to use the beach or local businesses to a 12 in 24 hour maximum stay (appendix 2);
- The existing area set as a 1 hour disc parking area is also subject to a request to change to a 12 in 24 hour maximum stay. Both of these areas will also be subject to a 6'6" width restriction so as to minimise encroachment onto the road way by larger vehicles (appendix 2);
- A new 4 hour maximum stay disabled parking bay will be created on the western side of La Neuve Route, replacing an existing 12 in 24 hour space and so that there is no loss of parking a new 12 in 24 hour space will be created further north by changing existing prohibition of parking areas (appendix 3);
- The existing 12 in 24 hour parking area on the north side of La Neuve Route will be subject to a new 6'6" width restriction so as to minimise any encroachment on the drive line by larger vehicles;
- Changes will be made to the existing prohibition of parking areas scheduled to reflect what is actually in place.

The Connétable believes the change of unrestricted parking to a 12 in 24 hour area will enable his Honorary Police to effectively resolve the problem of a number of vehicles being left for lengthy periods of time and will provide more parking for people who wish to use the facilities at St. Aubin, the beach area and the local businesses who will benefit from the increased availability of parking available.

The removal of the existing 1 hour disc parking and replacing this with 12 in 24 hour parking will assist in the aim of supporting local businesses as customers will be able to park for longer periods thus be able to support the local restaurants, cafes and shops.

The provision of a new disabled parking bay is a needed facility in this area and having a maximum 4 hour stay will ensure there is a turnover of use of this. The loss of the existing 12 in 24 hour bay there will be offset by removing an area of prohibition of parking close by and replacing this with a new 12 in 24 hour parking bay.

The Connétable has also reported a number of vehicles being left for lengthy periods of time on a section of La Route de Noirmont which is currently unregulated and has requested this be made a maximum stay of 7 consecutive days to enable his enforcement officers to manage the parking there. (Appendix 4)

Policing of the area is carried out by the Parish of St. Brelade through the Honorary Police and their parking warden. There is no additional resource implication for Infrastructure staff.

Road Traffic (St. Brelade) (Jersey) Order 1990:

Article 11 – Duration of parking on certain roads:

- Add a new part to cover roads restricted to a maximum stay of 7 consecutive days.

Schedule 2 – Prohibition of Waiting:

- Remove the existing entry for La Neuve Route “East side (from La Haule slipway for a distance of 145 yards in a southerly direction)” and replace with “East side (from La Haule Slipway for a distance of 147 yards in a southerly direction)”;
- Add “La Neuve Route - West side (from a point 153 yards south of Le Mont au Roux for a distance of 22 yards in a southerly direction)”;
- Remove the existing entry for La Neuve Route “West side (from a point 54 yards north of the northern boundary of the Landslide Car Park for a distance of 206 yards in a southerly direction)” and replace with “West side (from a point 183 yards south of Le Mont au Roux for a distance of 218 yards in a southerly direction)”.

Schedule 5 Part 1 – Parking discs 1 hour limit

- Remove the entry for “La Neuve Route - East side (between the southern boundary of the Landslide Car Park and the northern boundary of the Sacred Heart Roman Catholic Church).
- Add “La Neuve Route - East side (from a point 414 yards south from the junction with Le Mont au Roux for a distance 9 yards in a southerly direction)”
- Add “La Neuve Route - East side (from a point 433 yards south of the junction with Le Mont au Roux for a distance 10 yards in a southerly direction)”

Schedule 5

- Add a new Part 3 – Parking places restricted to vehicles not exceeding 6 feet 6 inches in width and to a time limit of 12 hours in any continuous 24 hour period;
- Add to the new Part 3 “La Neuve Route - East side (from a point 147 yards south of La Haule slipway for a distance 221 yards in a southerly direction)”;
- Add to the new Part 3 “La Neuve Route - West side (from a point 92 yards south of Le Mont au Roux for a distance of 62 yards in a southerly direction)”

Schedule 8

- Add a new part for roads with a maximum stay of 7 consecutive days in line with the new part to Article 11 above;
- Add to the new part of Schedule 8 in the first column “La Route de Noirmont” and in the second column “West side (from a point 19 yards north of the junction with La Ruelle du Clos du Parcq for a distance of 49 yards in a northerly direction”

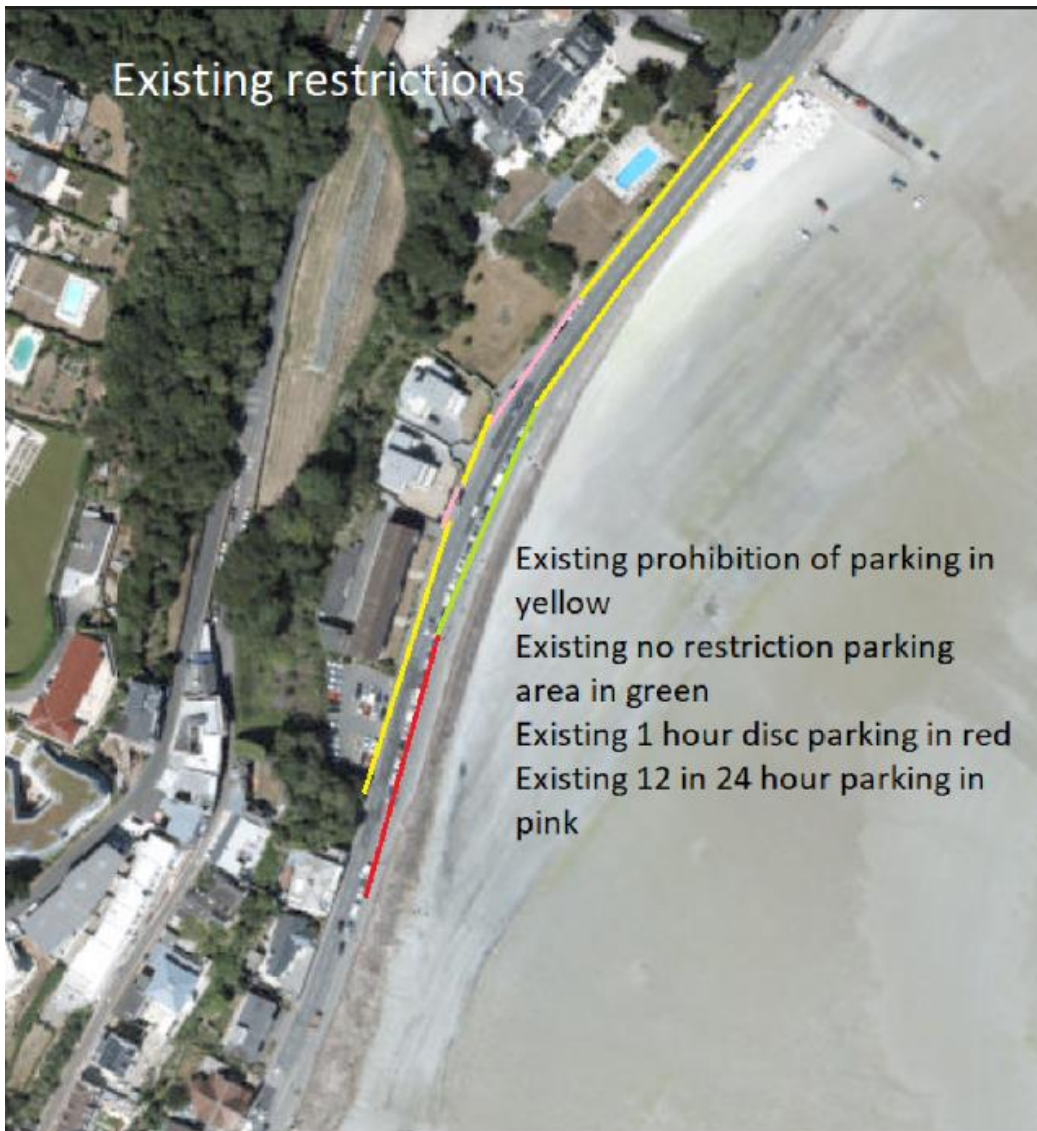
Road Traffic (Disabled Persons) (Parking) (Jersey) Order 2002

Schedule 1 – Parking places for vehicles used by disabled persons

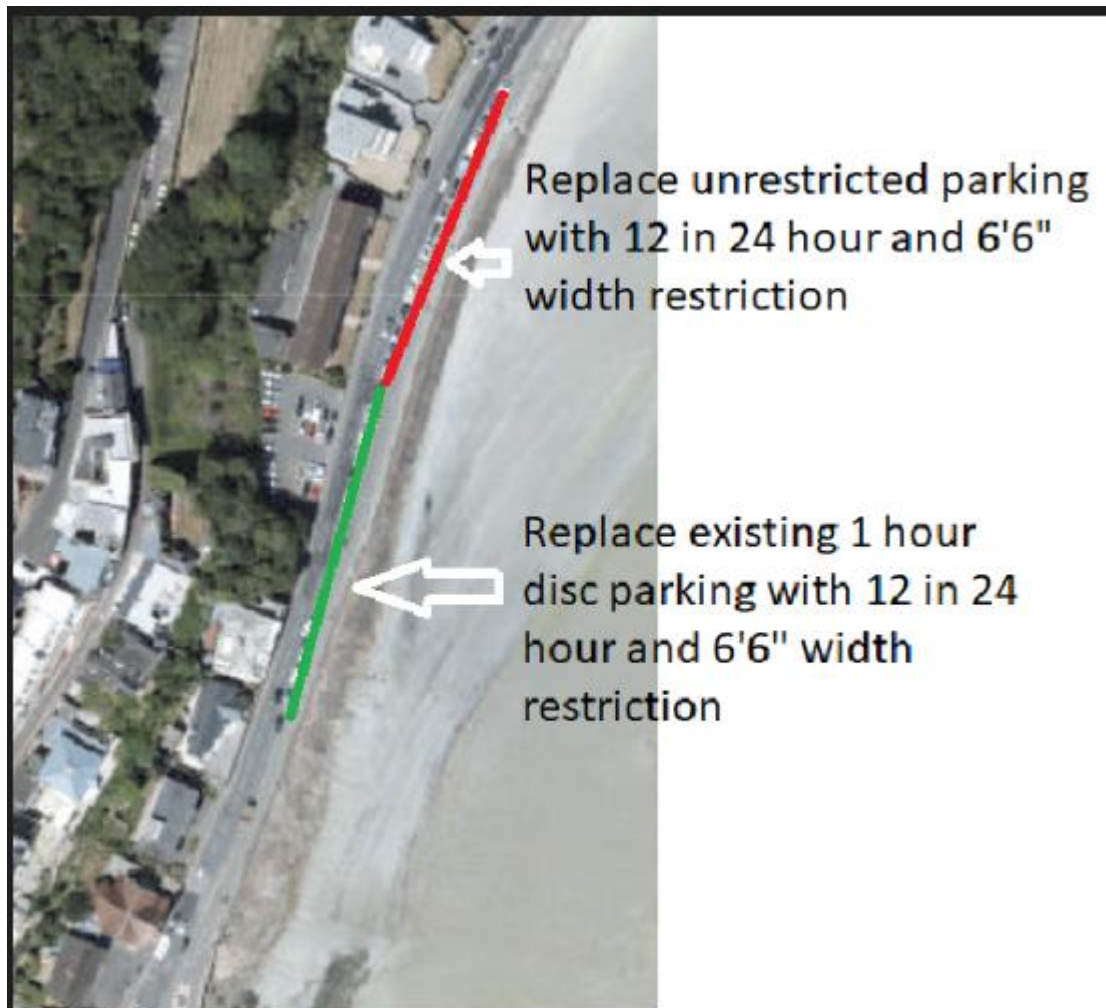
- Add before the entry for St. Brelade – parking places 4 hour limit, Le Boulevard a new entry - “La Neuve Route (West side from a point 168 yards south of La Mont au Roux for a distance of 7 yards in a southerly direction)”

The Road Traffic (St. Brelade) (Jersey) Order 1990 and the Road Traffic (Disabled Persons) (Parking) (Jersey) Order 2002 are administered by the Department for Infrastructure.

Appendix 1:



Appendix 2:



Appendix 3:



Appendix 4

